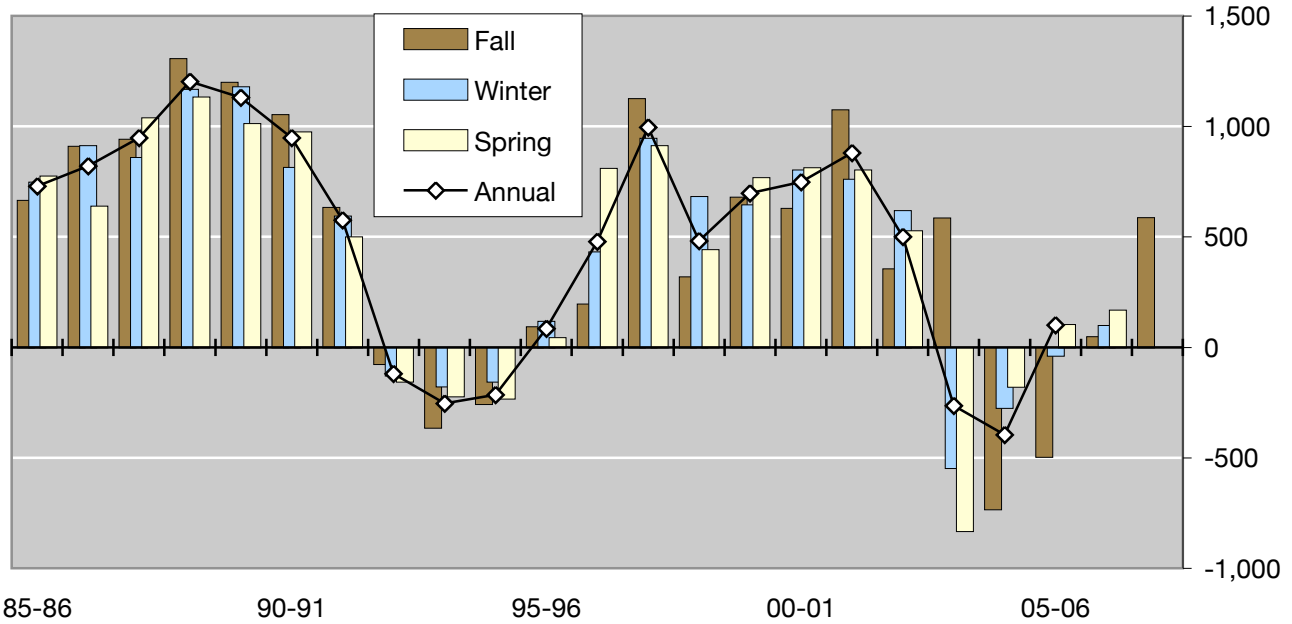


Academic Year Enrollment Trends

Absolute Change in Enrollment from Previous Year

Summary



Acad. Year	Enrollment			Ave. Ann.	Absolute Change			Ave. Ann.	Percent Change			Ave. Ann.
	F	W	S		F	W	S		F	W	S	
65-66	293	278	296	289								
70-71	2,269	2,198	2,235	2,234	546	398	284	409	31.7	22.1	14.6	22.8
75-76	4,017	3,974	3,895	3,962	528	490	400	473	15.1	14.1	11.4	13.5
80-81	4,659	4,460	4,406	4,508	428	434	390	417	10.1	10.8	9.7	10.2
85-86	6,513	6,344	6,315	6,391	666	748	776	730	11.4	13.4	14.0	12.9
90-91	11,927	11,281	11,118	11,442	1,054	815	975	948	9.7	7.8	9.6	9.0
95-96	11,957	11,534	11,051	11,514	93	118	44	85	0.8	1.0	0.4	0.7
96-97	12,153	11,966	11,861	11,993	196	432	810	479	1.6	3.7	7.3	4.2
97-98	13,280	12,913	12,774	12,989	1,127	947	913	996	9.3	7.9	7.7	8.3
98-99	13,600	13,596	13,216	13,471	320	683	442	482	2.4	5.3	3.5	3.7
99-00	14,280	14,241	13,984	14,168	680	645	768	698	5.0	4.7	5.8	5.2
00-01	14,909	15,045	14,797	14,917	629	804	813	749	4.4	5.6	5.8	5.3
01-02	15,985	15,807	15,600	15,797	1,076	762	803	880	7.2	5.1	5.4	5.9
02-03	16,341	16,426	16,128	16,298	356	619	528	501	2.2	3.9	3.4	3.2
03-04	16,927	15,880	15,296	16,034	586	-546	-832	-264	3.6	-3.3	-5.2	-1.6
04-05	16,194	15,606	15,117	15,639	-733	-274	-179	-395	-4.3	-1.7	-1.2	-2.5
05-06	16,431	15,568	15,220	15,740	-496	-38	103	101	-2.9	-0.2	0.7	0.6
06-07	16,479	15,667	15,389	15,845	48	99	169	105	0.3	0.6	1.1	0.7
07-08	17,066				587				3.6			